

# CHESNEY'S

*The Bio Ethanol Collection*





## Chesney's Bio Ethanol Fires

Sometimes it isn't possible to install a working fire. There may be problems with the chimney or no provision for a working fireplace. A fire from Chesney's Bio Ethanol Collection will provide an effective solution with living flames, efficient heat output and no need for a chimney.

Bio Ethanol fires are clean and convenient to install. Extracted from plants, the fuel is ecologically friendly and the only by-products released during burning are water vapour, CO<sub>2</sub> and heat. Installation is simple; providing ventilation requirements are satisfied and an electricity supply is available, an ethanol fire can be installed in just about any location.

The Chesney's Bio Ethanol Collection includes fires to fit most fire baskets and grates in our range as well as ribbon burners to suit the most contemporary of interiors.

The collection is split between manually ignited fires and those with automatic ignition and/or remote control.





# Automatic and Remote Control Bio Ethanol Fires



EFB22 Ethanol fire with log effect shown in Soho fire basket with patinated silver slips and Burlington limestone fireplace



## EFB22

The EFB22 is available with a realistic hand painted log set and is operated manually using an ignition button with two flame height settings. With a 4.0 kilowatt output, generous flame distribution and 2.75 litre fuel tank the fire can run for up to 5 hours without the need to re-fuel.

Fuel Type	Bio Ethanol
Volume Capacity	2.75 litres
Fuel Consumption	0.55 litres/hr
Thermal Output Net (max)	4kW/hr - 13648 BTU
Burning Time	5 hours
Air Circulation	Minimum 1/hr
Minimum Room Size	58m <sup>3</sup> per burner
Materials	Powder coated steel



These fires are easy to operate; either ignited by remote control or manual automatic ignition so there is no need to use a hand held fire lighter of any description.

Every fire has numerous safety sensors which monitor temperature, movement of the device and fuel levels and ensure that it is impossible to misuse the appliance.

Every fire has a number of easily adjusted flame settings which govern the consumption of fuel, flame height and duration of burn.

Some models are compatible for use with home smart systems.

Uniquely, these fires burn vapour from the ethanol fuel rather than the fuel itself and as a result the burning process is genuinely odourless.



EFB750 shown with patinated silver panels and black steel external frame



EFB750

The EFB750 ribbon burner can be installed as an inset fire with interior panels in a selection of reflective metal finishes or as a free standing fire. This model is operated by single button manual automatic ignition. The fire has a heat output of 4.0 kilowatt and a burn time, depending on flame setting, of up to 5 hours.

Fuel Type	Bio Ethanol
Volume Capacity	2.75 litres
Fuel Consumption	0.55 litres/hr
Thermal Output Net (max)	4kW/hr - 13648 BTU
Burning Time	5 hours
Air Circulation	Minimum 1/hr
Minimum Room Size	58m³ per burner
Materials	Powder coated steel





EFB1200 shown with patinated gold panels



EFB1200

The most sophisticated of Chesney’s Bio Ethanol fires, the EFB1200 ribbon burner has an integrated control panel with LCD display or can be operated by remote control hand set, smart phone or tablet using an in-built Wi-Fi system.

There are six settings of flame height and the fire can also be linked to a Smart Home system. The fire is available in bespoke sizes to order and can be lacquered in a high gloss finish in any RAL colour.

The EFB1200 can be used as a freestanding fire within a room or installed as an inset fire with interior panels in a selection of reflective metal effect finishes.

Fuel Type	Bio Ethanol
Volume Capacity	6 litres
Fuel Consumption	0.6 - 1.5 litres/hr
Thermal Output Net (max)	3.3 - 8.4kW - 11398 - 28490 BTU
Burning Time	4-10 hours
Air Circulation	Minimum 1/hr
Minimum Room Size	178m³ per burner
Materials	Powder coated steel

# Manual Ignition Bio Ethanol Fires

A range of manually ignited burners designed to fit the majority of the smaller fire baskets and register grates in the Chesney’s range. Each burner is supplied with a lighting rod, lighter and 5 litre fuel can and is available with a choice of logs, coals or pebbles.



The EFB18 fits a wide selection of Chesney’s fire baskets. The fire features a slider mechanism that allows the amount of heat being generated to be regulated. The EFB18 is available with a choice of logs, coals or pebbles. It has a 5 litre fuel reservoir with a heat output of 3.5 kilowatt and burn time of approximately 7½ hours.



Fuel Type	Bio Ethanol
Volume Capacity	5 litres
Fuel Consumption	0.64 litres/hr
Thermal Output Net (max)	3.5kW/hr - 13000 BTU
Burning Time (on max)	7 hours 30 minutes (approx)
Minimum Room Size	70m³ per burner
Materials	Stainless steel
Overall Size	123mm H x 400mm W x 317mm D



The EFBXS is a smaller, simpler burner ideal for fire baskets that will not accept the larger EFB18 burner. With a fuel reservoir of 2.5 litres and burn time of approximately 6 hours and heat output of 2.5 kilowatt. Available for use with logs, coals or pebbles.



Fuel Type	Bio Ethanol
Volume Capacity	2.5 litres
Fuel Consumption	0.45 litres/hr
Thermal Output Net (max)	2.5kW/hr - 8530 BTU
Burning Time (on max)	6 hours 30 minutes (approx)
Minimum Room Size	45m³ per burner
Materials	Stainless steel
Overall Size	76mm H x 340mm W x 190mm D



The EFB2 burner can be installed with all of the register grates in the Chesney’s collection with a set of coals for added realism. It has a 2 litre fuel reservoir and can burn for up to 6 hours with a heat output of 2.5 kilowatt. This burner can also be retro-fitted to a wide selection of antique register grates.



Fuel Type	Bio Ethanol
Volume Capacity	2 litres
Fuel Consumption	0.5 litres/hr
Thermal Output Net (max)	2.5kW/hr - 6180 BTU
Burning time (on max)	6 hours (approx)
Minimum Room Size	45m³ per burner
Materials	Stainless steel finished in high black temperature powder coat
Overall Size	122mm H x 330mm W x 110mm D

Each burner is supplied with a 5 litre Jerry can, a lighting rod and lighter, operations manual and a custom ‘top plate’ to fit a Chesney’s fire basket.

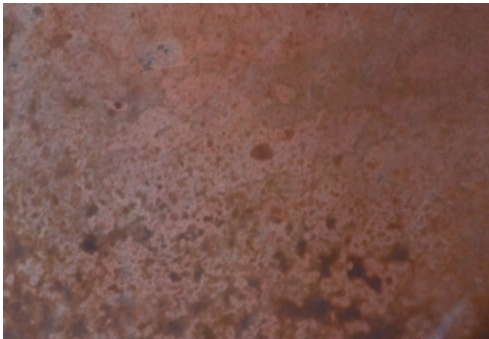


# Decorative Metal Finishes Collection

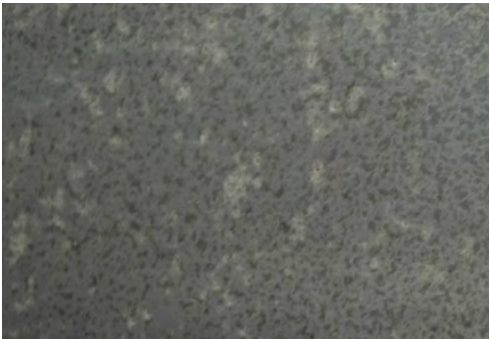
Designed to enhance the reflective qualities of a fire, Chesney’s new range of patinated metal effect panels make the ideal backdrop for an ethanol fire. Available in Gold, Silver, Copper and Bronze effect with a random patinated antique finish, these panels can be used within the fire chamber of an ethanol fire or as decorative slips to frame the fire opening of a traditional fireplace setting.



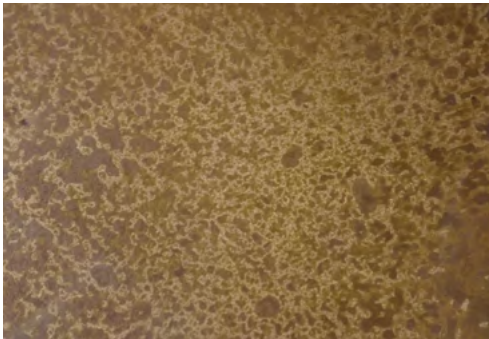
Gold



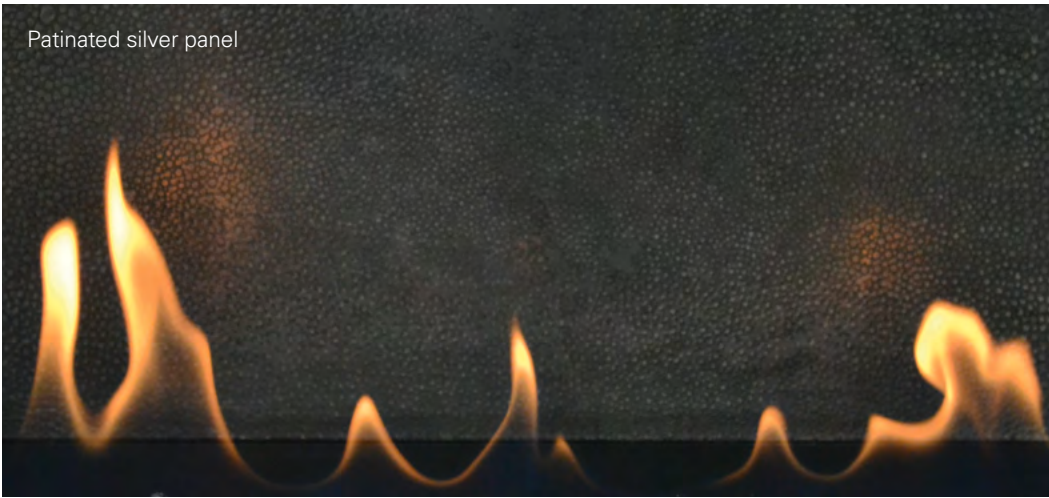
Copper



Silver



Bronze



# CHESNEY'S

## *Showrooms*

### London

194-200 Battersea Park Road,  
London SW11 4ND

*Telephone* 020 7627 1410

*Fax* 020 7622 1078

*Email* sales@chesneys.co.uk

Architectural Showroom:

521-525 Battersea Park Road,  
London SW11 3BN

*Telephone* 020 7978 7224

*Email* architectural@chesneys.co.uk

For details of UK nationwide stockists:

*Telephone* 0844 880 5375

*Fax* 0844 376 0046

*Email* dealerenquiries@chesneys.co.uk

[www.chesneys.co.uk](http://www.chesneys.co.uk)

### New York

Suite 1119, 11th Floor,  
D&D Building, 979 Third Avenue,  
New York NY 10022

*Telephone* 001 646 840 0609

*Fax* 001 646 840 0602

*Email* newyorksales@chesneys-usa.com

For details of US nationwide stockists:

001 404 948 1111

[www.chesneys.com](http://www.chesneys.com)



# Bio Ethanol Fire Collection 2016 vol.1 - Price List

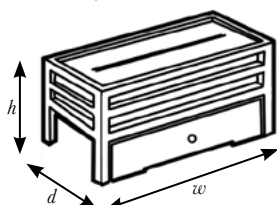
LONDON • NEW YORK • SHANGHAI

CHESNEY'S

## AUTOMATIC AND REMOTE CONTROL BIO ETHANOL FIRES

EFB22 Bio Ethanol Burner <i>to suit a 22" fire basket</i>	£ 2,275.00
EFB22 Log Set <i>(optional)</i>	350.00

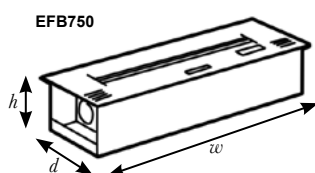
EFB22 (SHOWN IN THE SOHO FREESTANDING FIRE BASKET)



*h: 238mm d: 305mm w: 548mm*

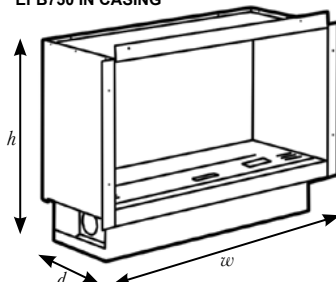
*Please Note: these dimensions will vary depending on the model of fire basket.*

EFB750 Bio Ethanol Burner	2,275.00
EFB750 Frame <i>(optional) Black powder coated paint finish</i>	250.00
EFB750 Casing <i>(optional) Black powder coated paint finish</i>	750.00
EFB750 Metal Finish Interior Panels <i>(optional) Available in Gold, Silver, Bronze and Copper patinated antique finishes</i>	1,250.00



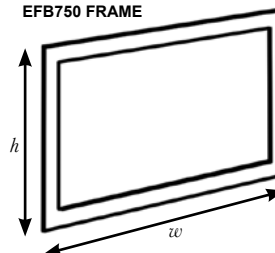
*h: 139mm d: 245mm w: 700mm*

EFB750 IN CASING



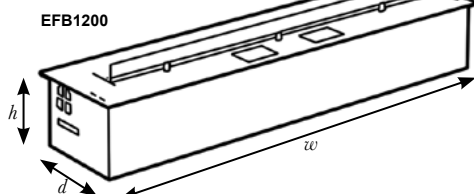
*h: 529mm d: 303mm w: 784mm*

EFB750 FRAME



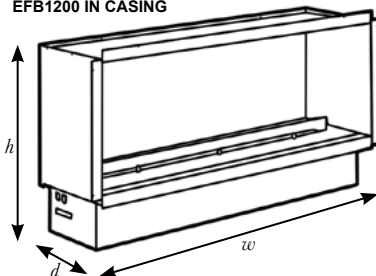
*h: 441mm w: 797mm*

EFB1200 Bio Ethanol Burner <i>with internal fuel reservoir</i>	7,895.00
EFB1200 Bio Ethanol Burner <i>with external fuel reservoir</i>	8,450.00
EFB1200 Frame <i>(optional) Brushed stainless steel finish</i>	650.00
EFB1200 Casing <i>(optional) Black powder coated paint finish</i>	1,350.00
EFB1200 Metal Finish Interior Panels <i>(optional) Available in Gold, Silver, Bronze and Copper patinated antique finishes</i>	1,595.00



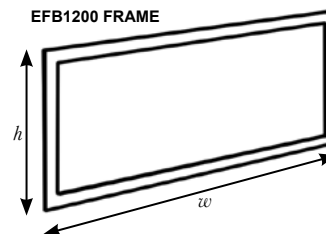
*h: 183mm d: 280mm w: 1190mm*

EFB1200 IN CASING



*h: 644mm d: 340mm w: 1274mm*

EFB1200 FRAME



*h: 491mm w: 1287mm*

### FUEL *Suitable for the EFB22, EFB750 and EFB1200*

1 Litre of Bio Ethanol Fuel	4.50
12 Litres of Bio Ethanol Fuel <i>(12 x 1 litre canisters)</i>	47.50

ALL PRICES ARE EXCLUSIVE OF VAT, DELIVERY AND INSTALLATION.  
INSTALLATION PRICES ARE SUBJECT TO SITE VISIT.

www.chesneys.co.uk



## Bio Ethanol Fire Collection 2016 vol.1 - Price List

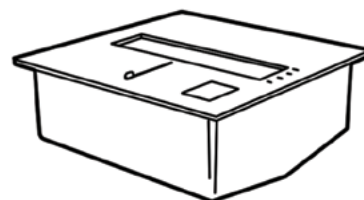
### MANUAL IGNITION BIO ETHANOL FIRES

*Each burner is supplied with a lighting rod, lighter and a 5 litre fuel can.*

£

EFB18 Burner Kit

1,400.00



EFBXS Burner Kit

750.00



EFB2 Burner Kit *to suit Britton/Godwin Register Grates*

599.00

EFB2 Burner Kit *to suit all other Register Grates*

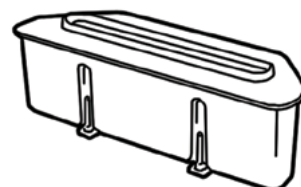
750.00

EFB2 Burner Kit *to suit Fire Baskets*

750.00

EFB2 Burner Kit *to suit Stone Bowl*

1,000.00



### ACCESSORIES FOR THE EFB18, EFBXS and EFB2

7 Piece Log Set

250.00

*Comprising of 6 assorted logs and 1 pine cone, to suit 18" baskets*

6 Piece Silver Log Set

250.00

*Comprising of 6 assorted logs, to suit 18" baskets*

10 Piece Log Set

350.00

*Comprising of 10 assorted logs, to suit 22" baskets*

12 Piece Coal Set

45.00

*To suit 18" baskets and register grates. 22" baskets require 2 sets*

10 Piece Pebble Set

50.00

*Available in white, grey and fawn*

5 Piece Pebble Set

50.00

*In white and fawn*

**FUEL** *Suitable for the EFB18, EFBXS and EFB2*

20 Litres of Bio Ethanol Fuel (4 x 5 litre canisters)

75.00

ALL PRICES ARE EXCLUSIVE OF VAT, DELIVERY AND INSTALLATION.  
INSTALLATION PRICES ARE SUBJECT TO SITE VISIT.